

# Residents Travel Information Pack

---

## Getting Around



**Mountbatten Park, North Baddesley**

# Welcome to your new Home at Mountbatten Park.

This brochure has been designed to help new residents travel sustainably in and around North Baddesley, Romsey and the surrounding area. It contains information on your travel options and the benefits of making journeys in a more sustainable way.

Using sustainable modes of transport can have a positive impact on your health, as well as your bank balance.

**Change4Life** gives details on the health benefits of Sustainable travel <http://www.nhs.uk/change4life/Pages/active-travel-ideas.aspx>

There are many places in the local area that you can walk or cycle to, and public transport connections are readily available for trips further afield.

**We hope you find this useful,  
Welcome to your new neighbourhood!**



## Walking



Walking is one of the easiest ways to get around locally while being more active, and becoming healthier at the same time. It is ideal for people of all ages and fitness levels who want to be more active and improves both mood and self-esteem.

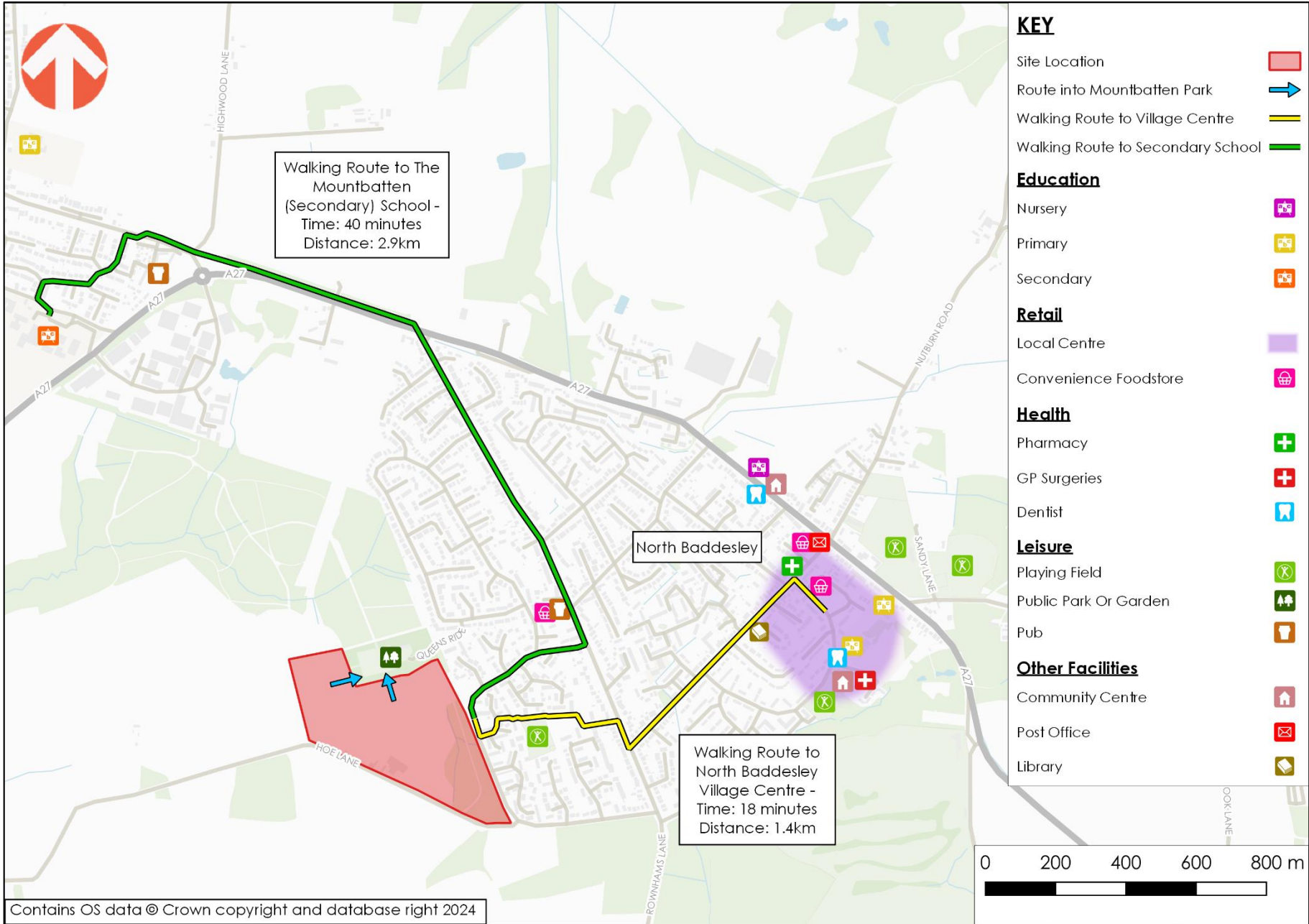
North Baddesley provides a number of facilities including **North Baddesley Infant and Junior Schools, local stores, restaurants and pubs, hairdressers, doctors, dentists, places of worship** and various **bus stops**.

**North Baddesley village centre** can be accessed on foot via an 18-minute walk, with pedestrian access from the site available from Sylvan Drive. Pedestrian links are also available to the nearby Mountbatten Park green space for recreation purposes, located immediately north of the Mountbatten Park housing.

The map on the following page shows local facilities in the area from local parks and playgrounds to bus stops and the centre of North Baddesley with its range of amenities.







## Cycling

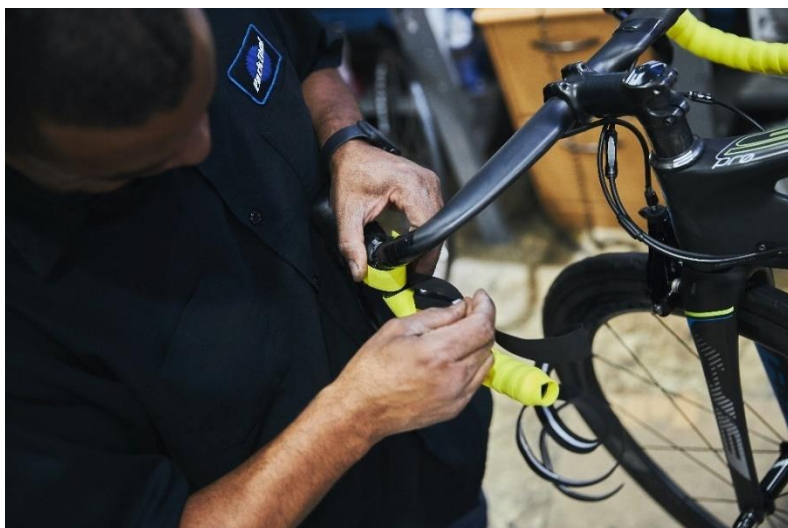


Cycling is a great way to get more active and is an efficient and economical form of transport. Regular cycling can reduce the risk of chronic illnesses and increase your fitness.

There are various providers of adult cycle training within Hampshire for those who would like to brush up their cycling skills and become more confident riding a bike ([myjourneyhampshire.com/cycle/get-cycling/cycle-training-providers/](https://myjourneyhampshire.com/cycle/get-cycling/cycle-training-providers/)). There are also cycling clubs and organised routes in the local area, with information available on the British Cycling 'Let's ride' webpage (<https://letsride.co.uk/>). Cycle training for children is available through the Bikeability program, delivered at schools or at Bikeability Holiday Courses which run during school holidays (<https://www.bikeability.org.uk/find-cycle-training/>).

Cycle parking is provided within each property at Mountbatten Park. Cycle parking is also available in North Baddesley on Fleming Avenue, outside the shops. In Romsey, there are multiple locations to park your bike, including within the Waitrose Car Park, on Church Place, and at Romsey Railway Station.

Bike maintenance is available at the 'Baddesley Bike Repairs' workshop (<https://bbikerepairs.uk/> / 07799787168) in North Baddesley. A Halfords store is available in nearby Eastleigh ([halfords.com/locations/eastleigh-store](https://halfords.com/locations/eastleigh-store) / 02380629655), as well as other independent outlets within Southampton, all offering a range of bikes, clothing, and cycling accessories available to purchase.





National Cycle Route 24 is a long distance cycle route, which runs from Bath to Eastleigh Railway Station, passing through Salisbury and North Baddesley, as well as the Mottisfont National Trust property and other picturesque areas.

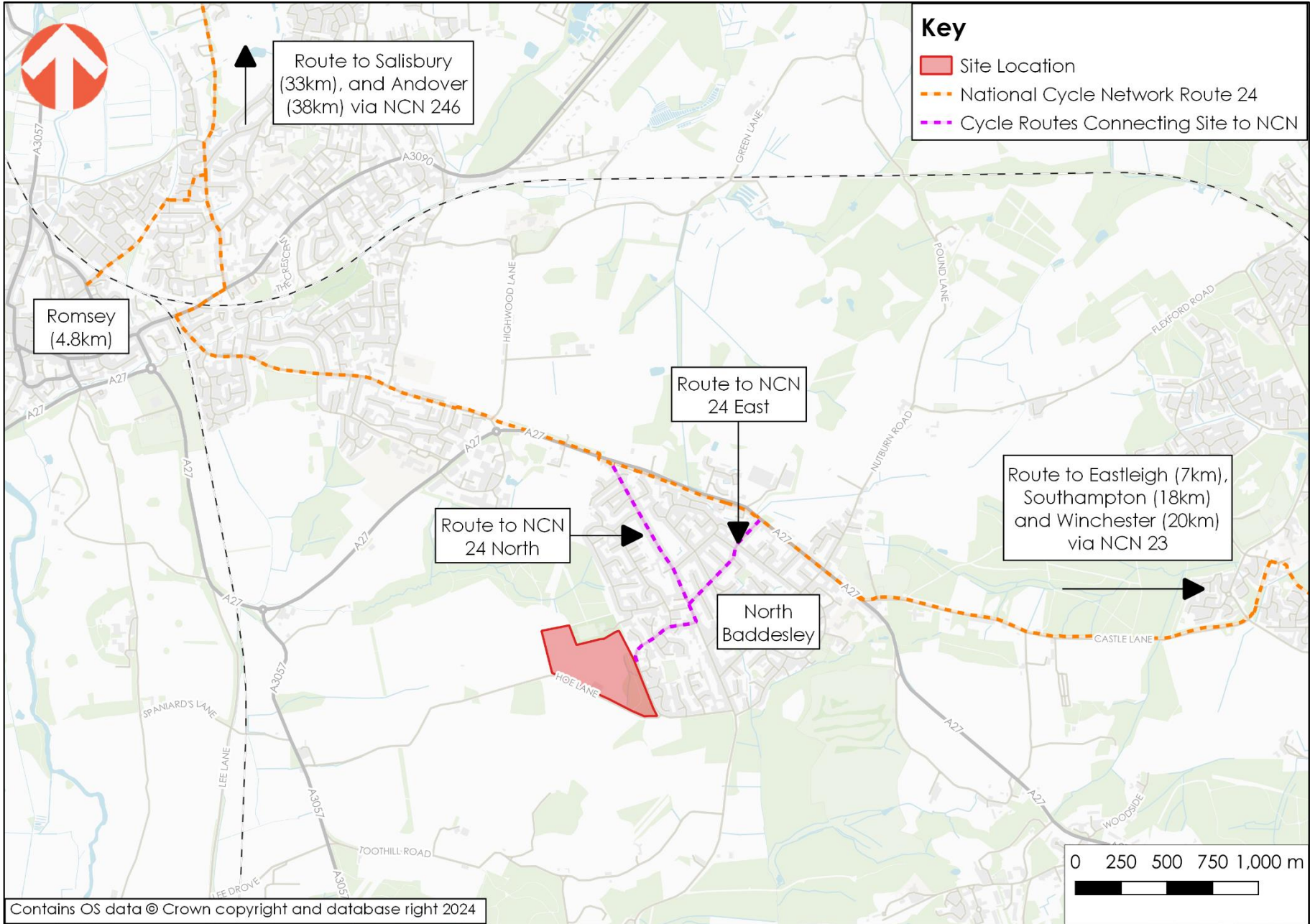
Route 24 joins with National Cycle Route 23 in Eastleigh, which runs from Reading to Southampton, with a further section on the Isle of Wight. The route passes through Winchester, a historic City with a wide range of shops and attractions.

National Cycle Route 246 joins Route 24 not far north of Romsey, continuing north along the 'Test Way' cycle route along a disused railway line towards Andover.

The National Cycle Routes include a mixture of traffic-free cycle paths and quiet roads and grant easy cycle access to a variety of local villages and towns within an hour's cycle.

A cycling map is shown on the following page.







## Motorcycling



Motorbikes can be more sustainable than driving a single occupancy car, requiring less space, and producing less pollution.

Parking is free for motorbikes throughout North Baddesley and in Test Valley Borough Council operated car parks when using designated motorcycle parking bays. This includes various car parks for all durations of stay within Romsey and Andover.

In the local area there are several motorbike shops, with a range of motorbikes for sale, as well as servicing. These include Engel Autos Car & Motorcycle Repairs (07513360484) in Romsey, and Spike Island Motorcycles Ltd ([spikeislandmotorcycles.net](http://spikeislandmotorcycles.net) / 02380252953) in Eastleigh.

There are several motorbike training providers nearby, offering a range of training for both beginners and advanced riders. Fatboy Motorcycle Training ([fatboymct.co.uk](http://fatboymct.co.uk) / 07519336610) operates from Southampton, and ADT Motorcycle Training ([southamptoncvt.co.uk](http://southamptoncvt.co.uk) / 02380337351) operates from Southampton and Winchester.





## Bus



Public transport provides a safe and affordable way to commute over longer distances that saves energy, reduces traffic congestion, and helps the environment.

The closest bus stop to the development is approximately a seven-minute walk away on Rownhams Lane, and is known as the 'Bedes Lea' bus stop. This stop provides services to destinations including Romsey, Eastleigh, and Southampton.

The table below shows the bus services available from the Bedes Lea stops.

### Bus Timetable Summary – Bedes Lea Stops

Service	Operator	Route	Approximate Average Frequency		
			Mon-Fri	Sat	Sun
4	Bluestar	Southampton – Shirley – Lord's Hill- Rownhams – North Baddesley - <b>Bedes Lea</b> – Whitenap - Romsey	2 per hour	2 per hour	Hourly
5	Bluestar	Eastleigh Bus Station – Barton Peveril College – North Baddesley – <b>Bedes Lea</b> – Whitenap - Romsey	Hourly	Every 2 Hours	-
46*	Stagecoach	Winchester Bus Stn. – Peter Symonds College – Hiltingbury – Valley Park – <b>Bedes Lea</b>	Two per day	-	-

\*Times vary dependent on Hampshire School Term Times  
Source: <http://travelinesw.com/> Date: 30.01.2024

The Bedes Lea bus stop hosts the regular **4 service** which serves Romsey, North Baddesley, and Southampton, including intermediate stops throughout the journey. This operates twice per hour Monday to Saturday, and hourly on Sundays.

The **5 service** provides an additional service which serves Eastleigh, Romsey and North Baddesley. This operates hourly Monday to Friday, and every two hours on Saturdays.

A school service (Number 605) operated by Bluestar is also available between Bedes Lea and Barton Peveril College from Tuesday - Friday.

## Bus Tickets

A **Bluestar & Unilink Network Zone** day ticket is:

£9.70 for adults / £7.00 for children\*.

This allows unlimited travel on all Bluestar and Unilink buses in the Southampton Network area. Single and return tickets are also available for individual journeys.

The **Solent Go Travelcard** is:

£9.00 for adults\*

This allows unlimited travel for a day in the south Hampshire area with the following travel operators: Bluestar, Unilink, Salisbury Reds, First, Stagecoach, Wheelers and Xelabus.

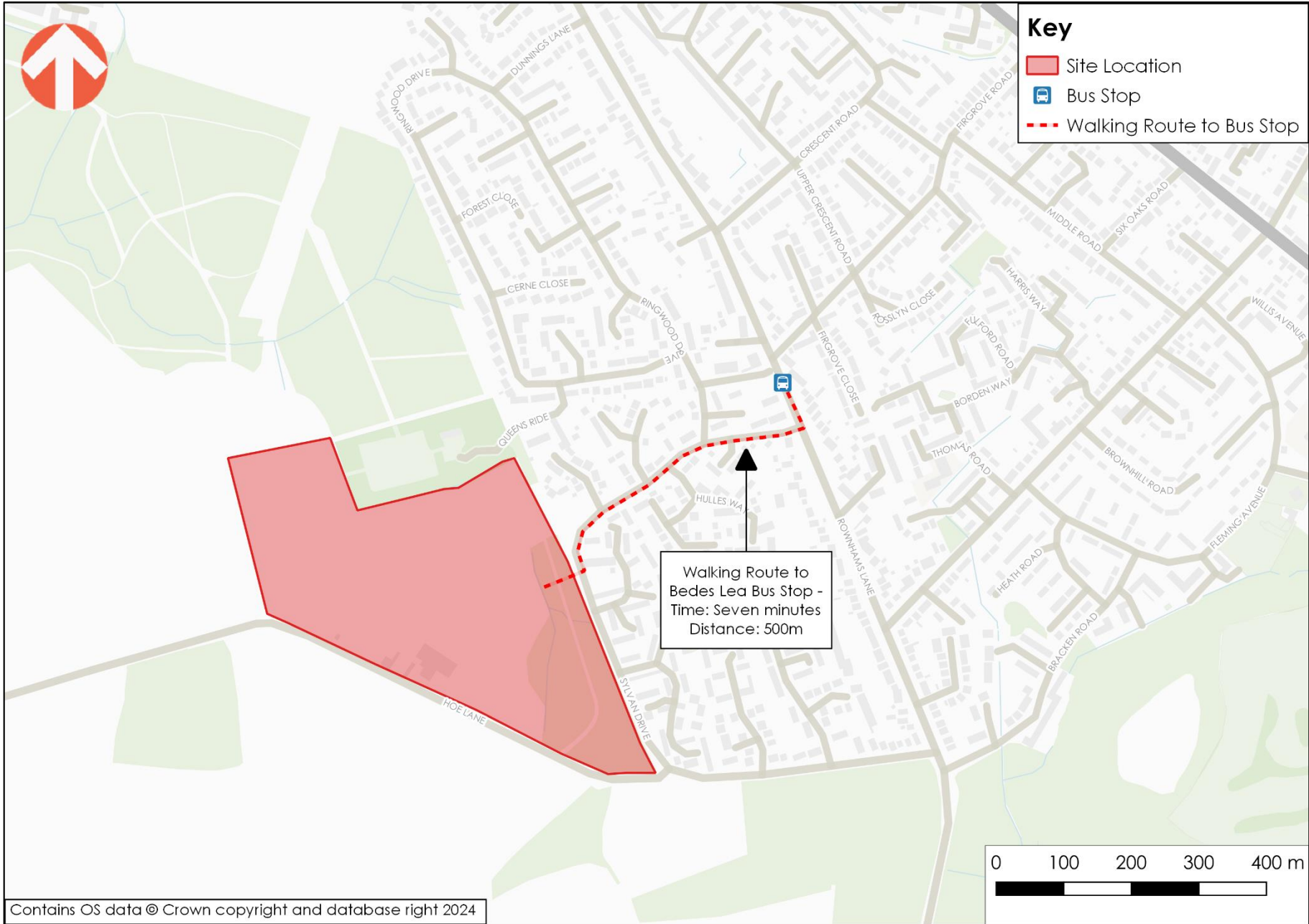
\*Prices correct as of January 2024

There is currently a £2 single bus fare cap on many bus services throughout the UK, including in Hampshire. This is due to run until 31<sup>st</sup> December 2024, when it will be reviewed (<https://www.gov.uk/guidance/2-bus-fare-cap>).

More information about travelling by bus in Hampshire can be found on the Hampshire County Council website ([hants.gov.uk/transport/publictransport](https://hants.gov.uk/transport/publictransport)). For more information about specific services, contact Bluestar ([bluestarbus.co.uk/day-tickets](https://bluestarbus.co.uk/day-tickets) / 01202 338421) or Stagecoach ([stagecoachbus.com](https://stagecoachbus.com) / 0345 241 8000).

The map on the following page shows the walking route to the nearest bus stop to your new home.







## Train



The nearest railway station is in **Romsey**, which can be accessed via the 4 or 5 bus services, or an 18-minute cycle ride via the National Cycle Network Route 24.

The 4 and 5 bus services route between Bedes Lea bus stop and Romsey, and takes nine minutes. In Romsey, both services stop on Alma Road, which is approximately a three-minute walk to the railway station, as shown on the map on the following pages.

Romsey Railway Station offers direct services to Cardiff (departing approximately every hour), Southampton (departing approximately every 30 minutes), Eastleigh (departing approximately every 30 minutes), Portsmouth (departing approximately every hour) and Salisbury (departing approximately every 30 minutes). It also provides a link to London via Southampton.

A typical return fare to Southampton Central is £7.80\* and takes as little as 12 minutes.

\*Prices correct as of January 2024

Cycling parking is available at Romsey Railway Station, with 14 sheltered spaces located at the station entrance and on the platform, both covered by CCTV. Car parking is located next to the railway station and has 20 spaces.

A peak ticket is £3.90, and the weekly rate is £15.50\*.

\*Prices correct as of January 2024

There is an accessible ticket machine, an induction loop, and staff available for assistance Monday to Saturday. The station has step free access to all platforms via different access points to the station, as well as a step free access from the car park. Passenger Assist is available for passengers requiring assistance when travelling by train; further information is available from National Rail. (<https://www.nationalrail.co.uk/help-and-assistance/passenger-assist/> / 0800 022 3720).

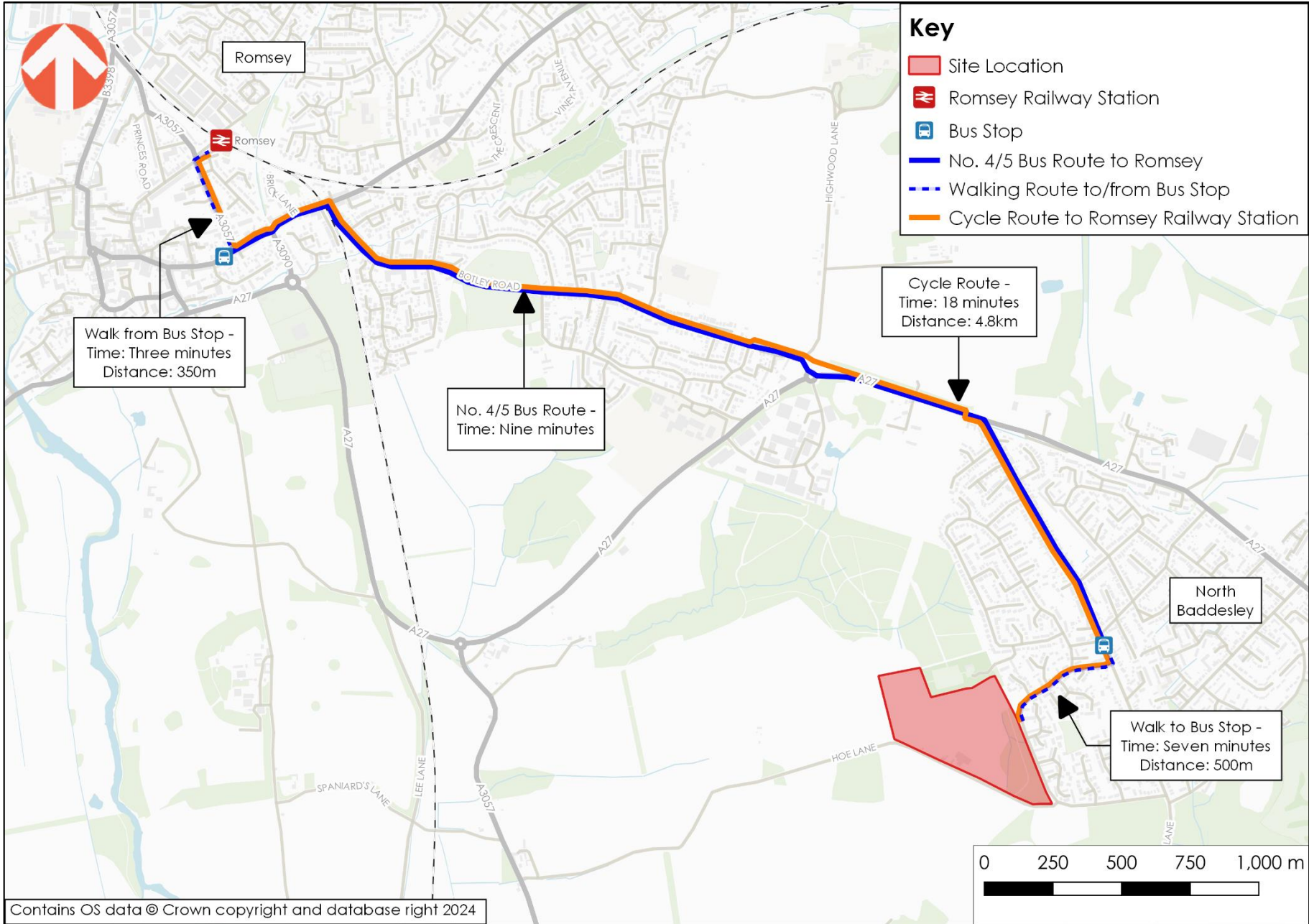
A full list of the station facilities and accessibility information is available from the South Western Railway website

<https://www.southwesternrailway.com/travelling-with-us/at-the-station/romsey>).

You can find out more about travelling by train in Hampshire on the 'My Journey Hampshire' website ([myjourneyhampshire.com/train/](http://myjourneyhampshire.com/train/)). For train enquiries, you contact National Rail or visit their website ([nationalrail.co.uk](http://nationalrail.co.uk) / 03457484950).

The map on the following page shows the route options for reaching Romsey Railway Station via bus or cycling.







## Car Sharing



Hampshire runs its own liftshare scheme which is a free website that matches drivers and passengers from across Hampshire who are doing the same or similar journeys (<https://liftshare.com/uk/community/hants>). 'My Journey Hampshire' is a similar scheme oriented towards employers to encourage businesses to promote car sharing within the Hampshire region (<https://myjourneyhampshire.com/carshare>). Your employer may participate in the scheme! Such schemes include benefits such as meeting new people, reducing your carbon footprint, reducing congestion and saving money!

## Other forms of Sustainable Transport

**Eco-Driving** is a term used to describe energy efficient use of vehicles. It is a great and easy way to reduce fuel consumption from road transport so that less fuel is used to travel the same distance. Visit the Energy Saving Trust (<https://energysavingtrust.org.uk/advice/efficient-driving>) for efficient driving advice.

**Electric Vehicles** offer an alternative to driving a fossil fuel vehicle, and helps to reduce your carbon footprint. Electric vehicles can also help save you money, often with lower running costs. Electric charge points are provided at most properties in Mountbatten Park, allowing the ability to charge your electric vehicle at home.

There is further information and advice on electric vehicles on the Energy Saving Trust website (<https://energysavingtrust.org.uk/advice/electric-vehicles/>)

**Trip linking** is a great way to make your journeys more efficient. Instead of doing several individual trips, it may be possible to combine multiple trips, reducing both time and fuel costs.

**Taxi** – A number of taxis operate around the North Baddesley and Romsey area, including:

Samtax Taxi – 01794 514945

Abbey Cars Taxi - 01794 513385

**Test Valley Connect** – This service operates for those that have mobility problems or a disability (physical or sensory). It takes residents into Andover and Romsey to access local amenities, operating in selected rural areas across Test Valley. They also operate a for-hire minibus service for bespoke journeys. Such services assist in retaining passengers' independence by providing the opportunity for shopping and social contact.

<https://www.hants.gov.uk/transport/alternativetransport/communitytransport/providerdetails?id=213> / 01264 356808

**Transmobility** operates a similar for-hire fleet of wheelchair accessible taxis for those in the wider Southampton area.

<https://transmobility.co.uk/> / Tel: 08000 77 87 97 / 24hr: 07837 004201

**Working from home** can be an effective way to reduce the need to travel and reduce your environmental footprint. Speak to your employer to see what opportunities there may be for home-working part or full-time.

**Home deliveries** can help reduce the number of trips you need to make, as well as being more convenient. Many high street retailers offer home delivery, including most supermarkets.

